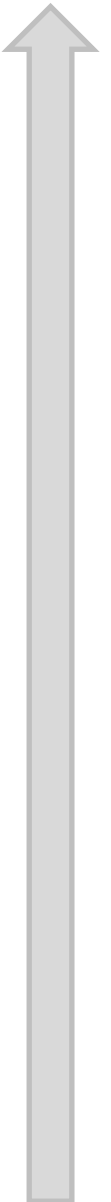


MANITOU 150 ATS

- Working height : 15 m
- Maximum offset : 8,36 m
- 250 kg including 2 people
- Diesel engine 47 HP
- Turret rotation : 360 °
- 4 simultaneous movements

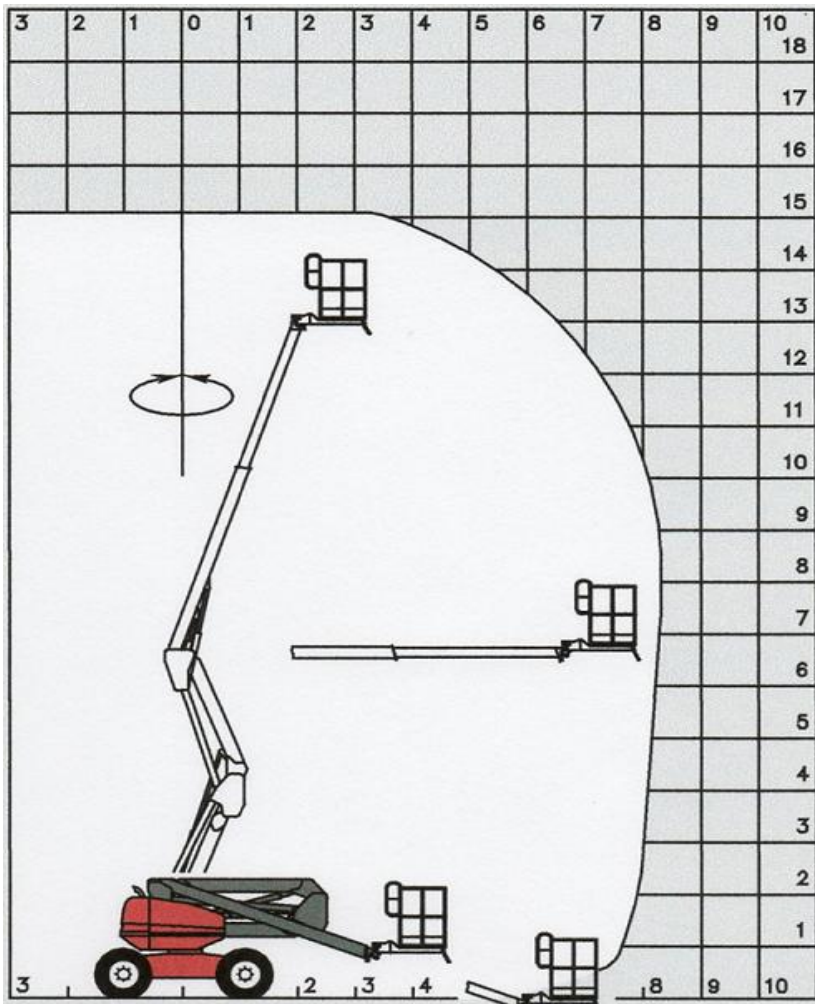


40
second



150 ATS

Load capacity.....250 kg including 2 people
 Working height15 m
 Platform height13 m
 Basket rotation.....180°
 Turret rotation360°
 Overall length6.16 m
 Overall width.....2.00 m
 Overall height2.28 m
 Basket size.....1.80 x 1.10 m
 Max. offset/up and
 over clearance8.36 m/ 6.83 m
 Ground clearance37.7 cm
 Turning radius ins/outside1,76/4,38 m
 Engine PERKINS 903-27 47 HP
 Maxi. Travel speed 5,45 km/h
 Travel speed in high position0.8 km/h
 Lifting time40 s
 Inside/outside use.....wind 45 km/h
 Gradeability :
 on hard surface.....35%
 on rough terrain.....35%
 Max. slope accepted : 5° or 9%
 Hydraulic tank.....75 l.
 Dieseltank.....90 l.
 Tyres340/80 RT 18
 Steering2 wheel steer
 Weight7800 kg



Standard equipment

- Hour meter
- Tank level indicator
- Proportional controls
- Warning buzzer in the basket
- Rotating beacon
- Lifting brackets
- Differential lock
- Safety electric pump
- 220 V predisposal
- Front axle with limited slip

Options

- All motion alarm
- Working lights
- Digital code
- 220 V electric plug in platform
- Generating set 3,2 kw

